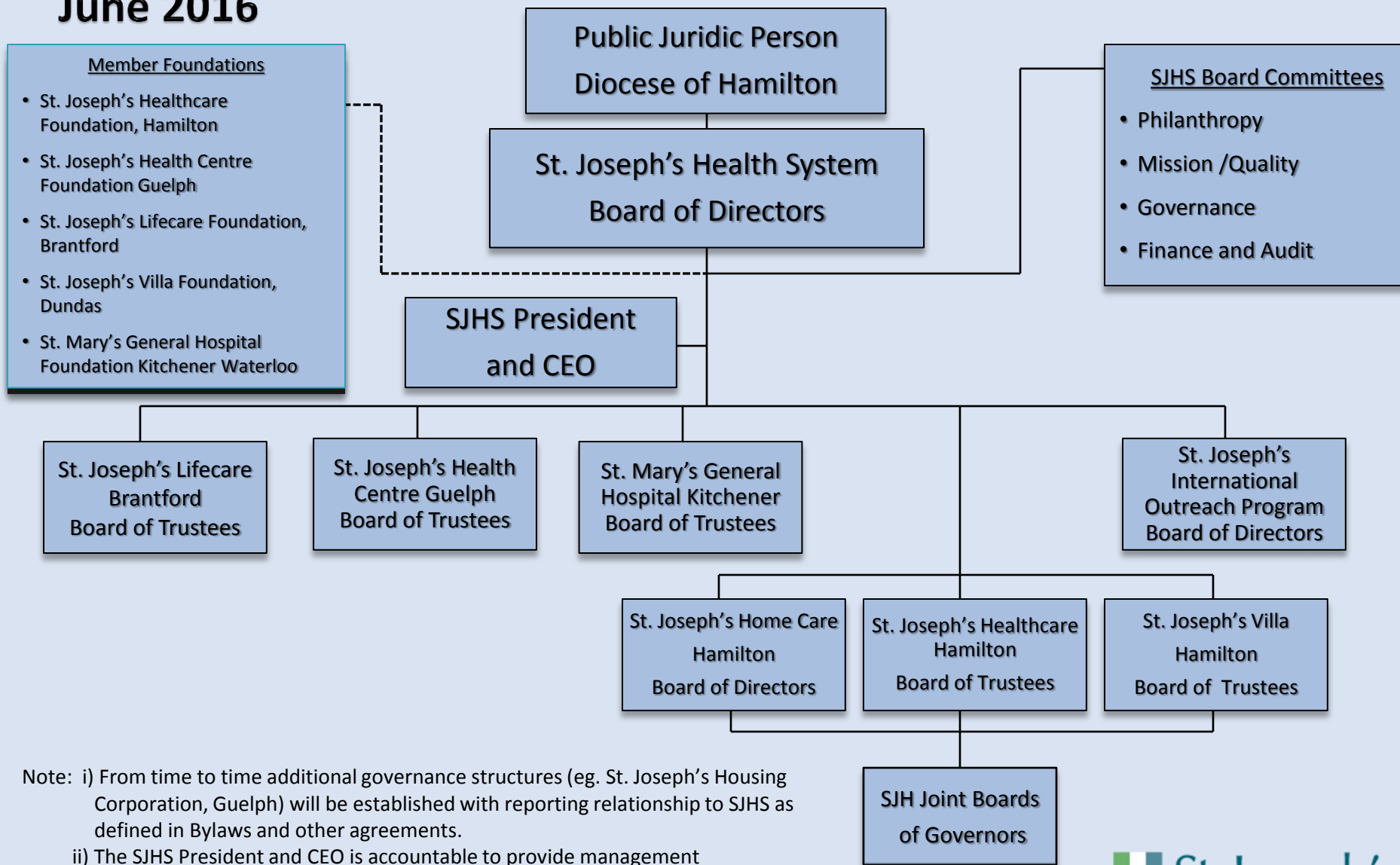


SJHS Organization Chart

June 2016



Note: i) From time to time additional governance structures (eg. St. Joseph's Housing Corporation, Guelph) will be established with reporting relationship to SJHS as defined in Bylaws and other agreements.

ii) The SJHS President and CEO is accountable to provide management services, including site Presidents, to member organization Boards of Trustees/Directors. Local site Presidents have responsibilities to local Boards as defined in the Bylaws and other agreements.